



Micro Commercial Components  
 20736 Marilla Street Chatsworth  
 CA 91311  
 Phone: (818) 701-4933  
 Fax: (818) 701-4939

**MT150DT08L2**  
**MT150DT12L2**  
**MT150DT16L2**  
**MT150DT18L2**

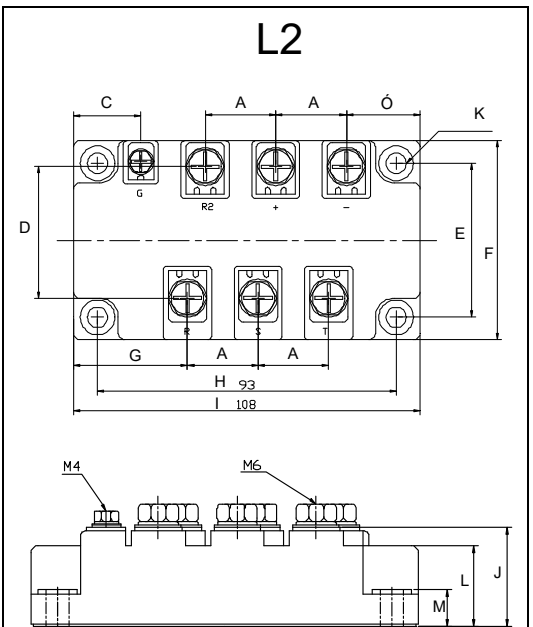
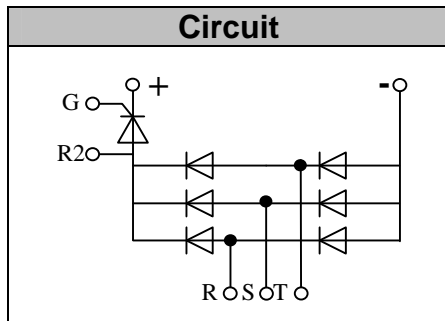
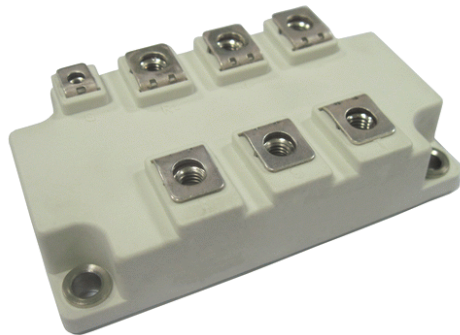
## Features

- Lead Free Finish/RoHS Compliant (NOTE 1) ("P" Suffix designates RoHS Compliant. See ordering information)
- Blocking Voltage: 800 to 1800V
- Three Phase Bridge and a Thyristor
- Low Forward Voltage

**150 Amp**  
**Three Phase**  
**Bridge + Thyristor**  
**800~1800 Volts**

## Applications

- Inverter for AC or DC motor control
- Current stabilized power supply
- Switching power supply
- UL recognized applied for file no. E360040



DIM	INCHES		MM		NOTE
	MIN	MAX	MIN	MAX	
A	.854	.878	21.70	22.30	
B	.894	.917	22.70	23.30	
C	.815	.839	20.70	21.30	
D	1.60	1.63	40.70	41.30	
E	1.88	1.90	47.70	48.30	
F	2.43	2.45	61.70	62.30	
G	1.39	1.41	35.20	35.80	
H	3.65	3.67	92.70	93.30	
I	4.24	4.26	107.70	108.30	
J	1.05	1.08	26.70	27.30	
K		.256		6.50	∅
L	.846	.870	21.50	22.10	
M	.323	.346	8.20	8.80	

## Module Type

TYPE	VRRM/ VDRM	VRSM
MT150DT08L2	800V	900V
MT150DT12L2	1200V	1300V
MT150DT16L2	1600V	1700V
MT150DT18L2	1800V	1900V

## ◆Diode

### Maximum Ratings

Symbol	Item	Conditions	Values	Units
ID	Output Current(D.C.)	Tc=93°C Three phase full wave	150	A
IFSM	Surge forward current	t=10mS Tvj =45°C	1500	A
i <sup>2</sup> t	Circuit Fusing Consideration		11250	A <sup>2</sup> s
Visol	Isolation Breakdown Voltage(R.M.S)	a.c.50HZ;r.m.s.;1min	3000	V
Tvj	Operating Junction Temperature		-40 to +150	°C
Tstg	Storage Temperature		-40 to +125	°C
Mt	Mounting Torque	To terminals(M4)	2±15%	Nm
Mt		To terminals(M6)	5±15%	Nm
Ms		To heatsink(M6)	5±15%	Nm
Weight		Module (Approximately)	320	g

## Thermal Characteristics

Symbol	Item	Conditions	Values	Units
Rth(j-c)	Thermal Impedance, max.	Junction to Case(TOTAL)	0.14	°C/W
Rth(c-s)	Thermal Impedance, max.	Case to Heat sink	0.07	°C/W

## Electrical Characteristics

Symbol	Item	Conditions	Values	Units
VFM	Forward Voltage Drop, max.	T=25°C IF =150A	1.35	V
I <sub>RRM</sub>	Repetitive Peak Reverse Current, max.	Tvj =25°C VRD=VRRM Tvj =150°C VRD=VRRM	≤2 ≤10	mA mA

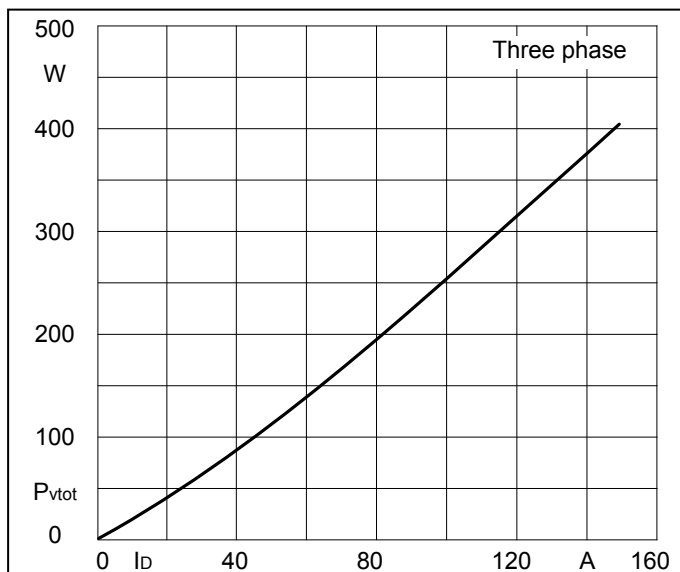
**◆Thyristor**  
**Maximum Ratings**

Symbol	Item	Conditions	Values	Units
$I_{TAV}$	Average On-State Current	$T_c=93^{\circ}\text{C}$ , Single Phase half wave 180° conduction	150	A
$I_{TSM}$	Surge On-State Current	$T_{VJ}=45^{\circ}\text{C}$ $t=10\text{ms}$ (50Hz), sine $VR=0$	1500	A
$i^2t$	Circuit Fusing Consideration		11250	$\text{A}^2\text{s}$
Visol	Isolation Breakdown Voltage(R.M.S)	a.c.50HZ;r.m.s.;1 min	3000	V
$T_{vj}$	Operating Junction Temperature		-40 to +125	$^{\circ}\text{C}$
$T_{stg}$	Storage Temperature		-40 to +125	$^{\circ}\text{C}$
$M_t$	Mounting Torque	To terminals(M4)	$2\pm 15\%$	Nm
$M_t$		To terminals(M6)	$5\pm 15\%$	Nm
$M_s$		To heatsink(M6)	$5\pm 15\%$	Nm
$di/dt$	Critical Rate of Rise of On-State Current	$T_{VJ}=T_{VJM}$ , $V_D=1/2V_{DRM}$ , $I_G=100\text{mA}$ $dI_G/dt=0.1\text{A}/\mu\text{s}$	150	$\text{A}/\mu\text{s}$
$dv/dt$	Critical Rate of Rise of Off-State Voltage, min.	$T_J=T_{VJM}$ , $V_D=2/3V_{DRM}$ , linear voltage rise	500	$\text{V}/\mu\text{s}$

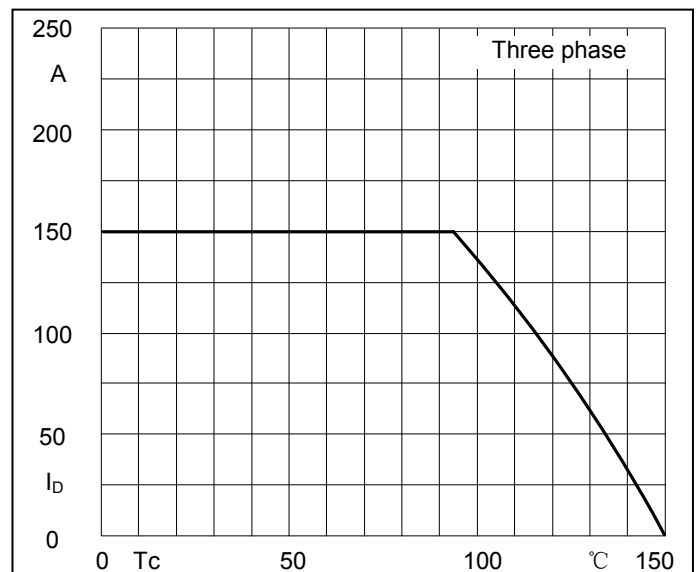
**Electrical and Thermal Characteristics**

Symbol	Item	Conditions	Values			Units
$V_{TM}$	Peak On-State Voltage, max.	$T=25^{\circ}\text{C}$ $I_T=150\text{A}$			1.35	V
$I_{RRM}/I_{DRM}$	Repetitive Peak Reverse Current, max. / Repetitive Peak Off-State Current, max.	$T_{VJ}=T_{VJM}$ , $V_R=V_{RRM}$ , $V_D=V_{DRM}$			40	mA
$V_{GT}$	Gate Trigger Voltage, max.	$T_{VJ}=25^{\circ}\text{C}$ , $V_D=6\text{V}$			3	V
$I_{GT}$	Gate Trigger Current, max.	$T_{VJ}=25^{\circ}\text{C}$ , $V_D=6\text{V}$			150	mA
$R_{th(j-c)}$	Thermal Impedance, max.	Junction to Case			0.16	$^{\circ}\text{C}/\text{W}$
$R_{th(c-s)}$	Thermal Impedance, max.	Case to Heatsink			0.07	$^{\circ}\text{C}/\text{W}$

**Performance Curves**

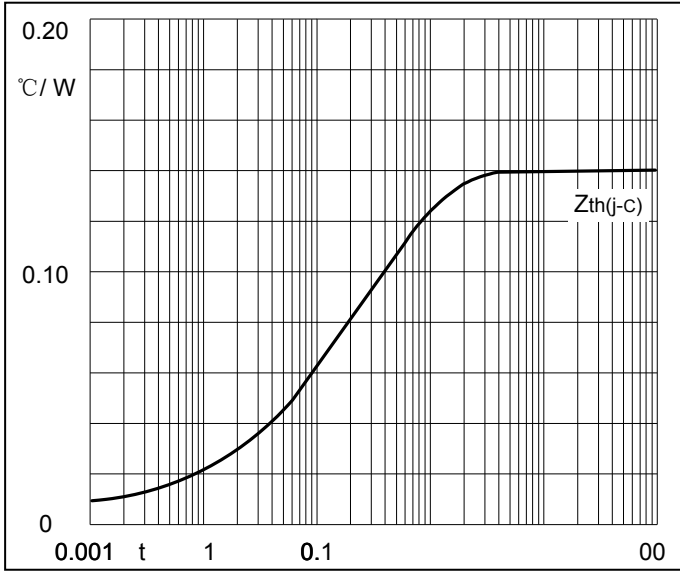


**Fig1. Power dissipation**

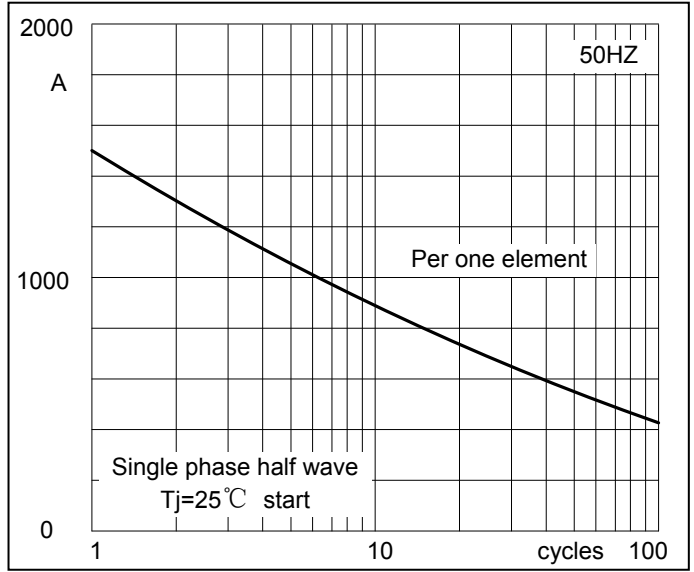


**Fig2. Forward Current Derating Curve**

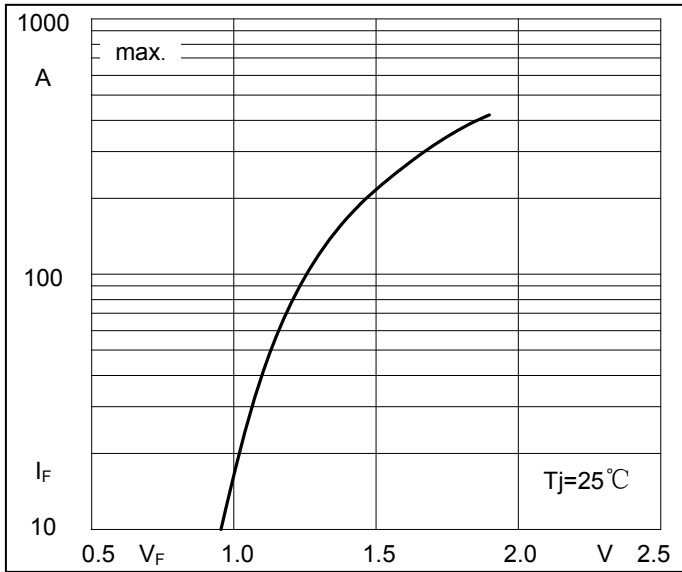
**Performance Curves**



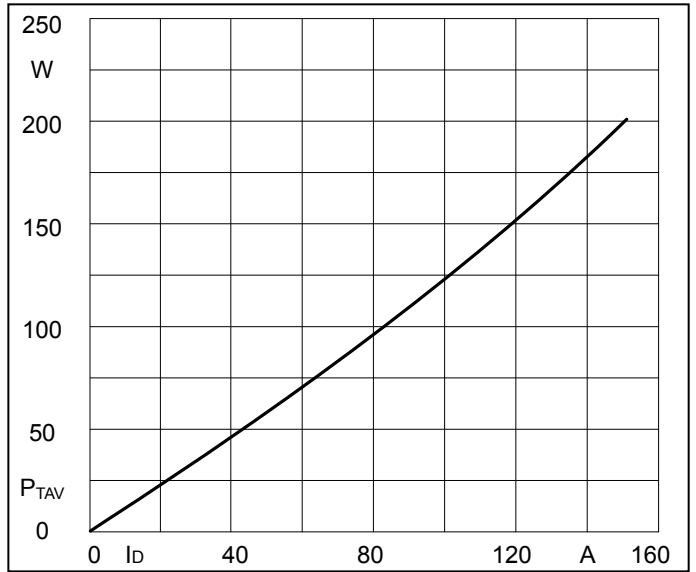
**Fig3. Transient thermal impedance**



**Fig4. Max Non-Repetitive Forward Surge Current**

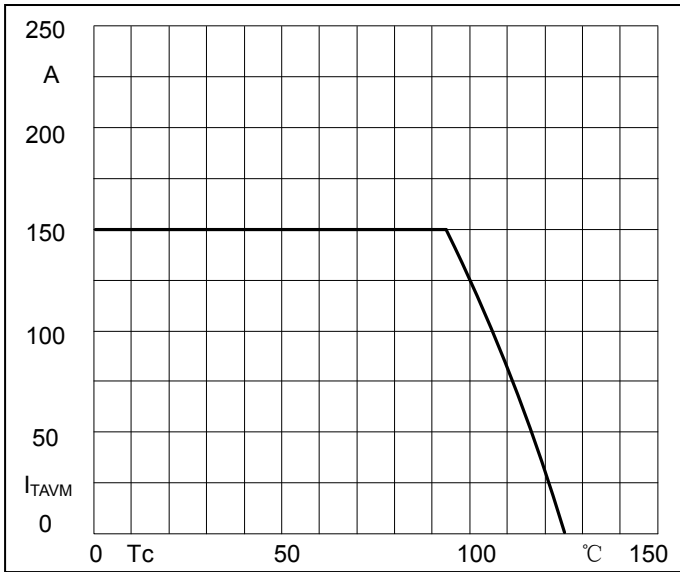


**Fig5. Forward Characteristics**

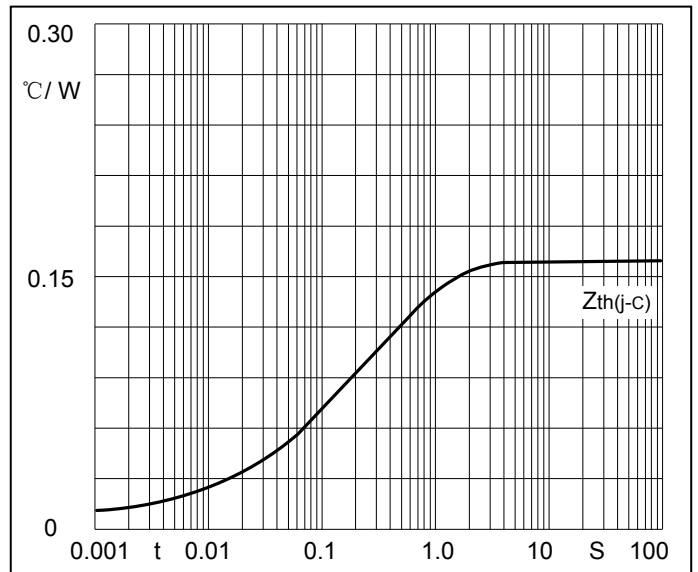


**Fig6. SCR Power dissipation**

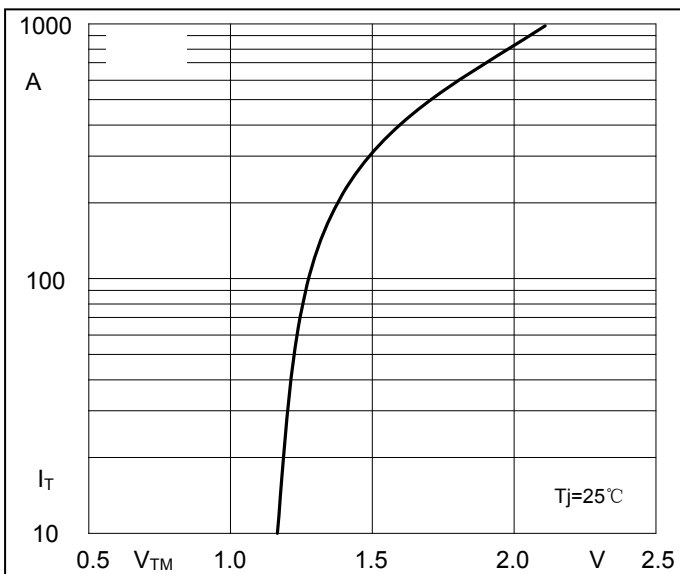
**Performance Curves**



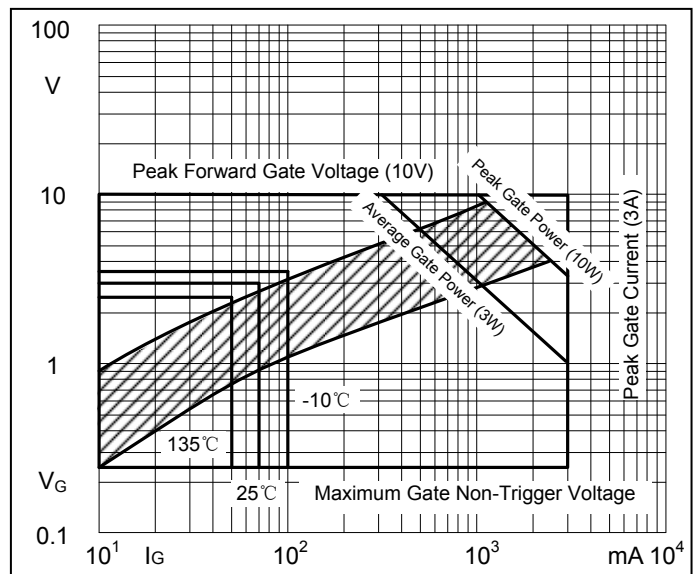
**Fig7. SCR Forward Current Derating Curve**



**Fig8. SCR Transient thermal impedance**



**Fig9. SCR Forward Characteristics**



**Fig10. Gate trigger Characteristics**



Micro Commercial Components

### Ordering Information :

Device	Packing
Part Number-BP	Bulk: 4PCS/BOX ;40PCS/CTN

**\*\*\*IMPORTANT NOTICE\*\*\***

**Micro Commercial Components Corp.** reserves the right to make changes without further notice to any product herein to make corrections, modifications , enhancements , improvements , or other changes . **Micro Commercial Components Corp .** does not assume any liability arising out of the application or use of any product described herein; neither does it convey any license under its patent rights ,nor the rights of others . The user of products in such applications shall assume all risks of such use and will agree to hold **Micro Commercial Components Corp .** and all the companies whose products are represented on our website, harmless against all damages.

**\*\*\*LIFE SUPPORT\*\*\***

MCC's products are not authorized for use as critical components in life support devices or systems without the express written approval of Micro Commercial Components Corporation.

**\*\*\*CUSTOMER AWARENESS\*\*\***

Counterfeiting of semiconductor parts is a growing problem in the industry. Micro Commercial Components (MCC) is taking strong measures to protect ourselves and our customers from the proliferation of counterfeit parts. MCC strongly encourages customers to purchase MCC parts either directly from MCC or from Authorized MCC Distributors who are listed by country on our web page cited below. Products customers buy either from MCC directly or from Authorized MCC Distributors are genuine parts, have full traceability, meet MCC's quality standards for handling and storage. **MCC will not provide any warranty coverage or other assistance for parts bought from Unauthorized Sources.** MCC is committed to combat this global problem and encourage our customers to do their part in stopping this practice by buying direct or from authorized distributors.

---

[www.mccsemi.com](http://www.mccsemi.com)